

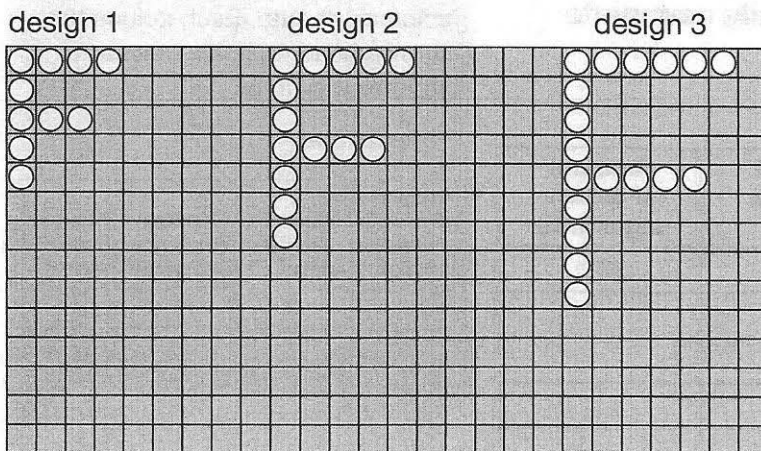
# 2-D Patterns

**Goal**

Use models and t-charts to record, extend, and make predictions about number patterns.

Look at design 1 of the capital letter F.

It has been made from 10 dots.


**At-Home Help**

A 2-D pattern has a length and a width.

For example, these shapes form a 2-D pattern.



A t-chart has 2 columns. The data in both columns are related.

For example: As the number of songs increases by 1, the number of minutes of practice increases by 15 minutes.

Number of songs	Number of minutes of practice
1	10
2	25
3	40

1. How many dots are needed to complete design 4?

\_\_\_\_\_

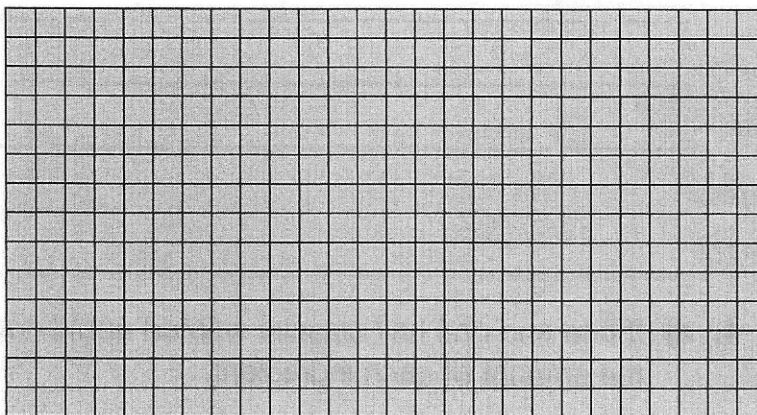
2. Predict the number of dots needed to complete design 5.

\_\_\_\_\_

3. Draw design 4 and design 5.

4. Complete the t-chart to show the pattern.

Letter design	Number of dots
1	_____
2	_____
3	_____
4	_____
5	_____



5. If you had a total of 50 dots, what design number would the letter F be?

\_\_\_\_\_